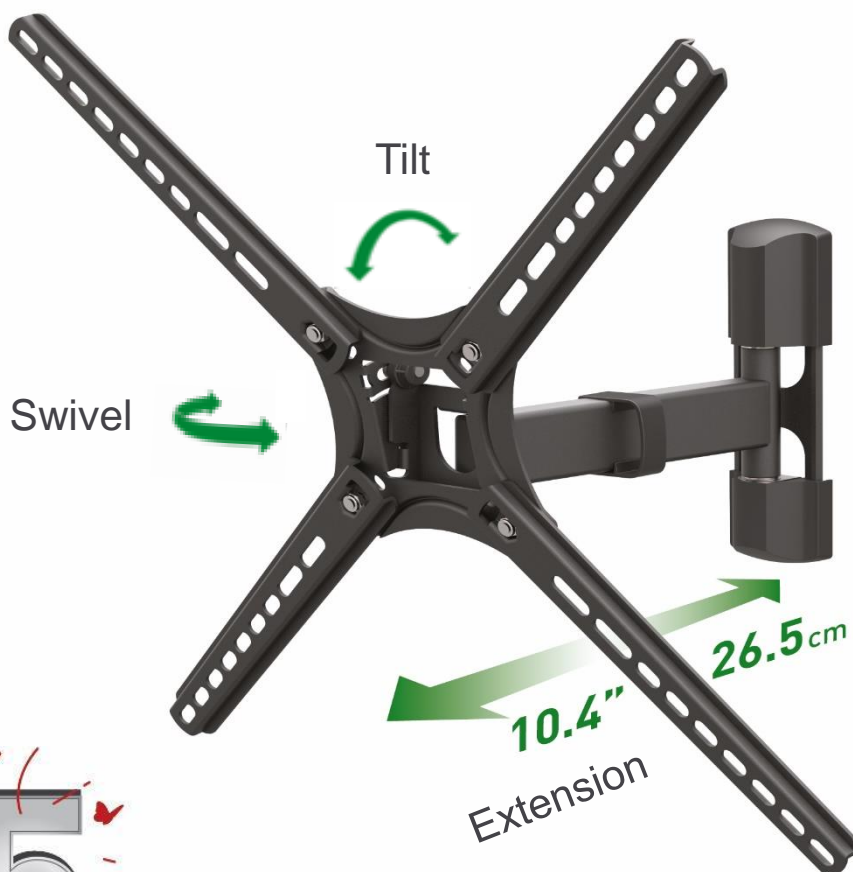


TV Wall Mount



Download Assembly Instructions with Text

For more information: [barkanmounts.com](https://www.barkanmounts.com)

If you are satisfied with the product, please give us a 5 stars ★★★★★ rating on the website you bought it from. If you are not satisfied please contact us at <https://www.barkanmounts.com/support> and we will solve the problem for you.

TV Size

13"-65"

33cm-165cm

TV Weight

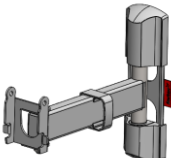

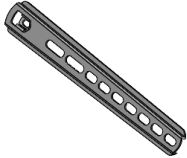




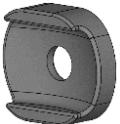



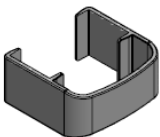
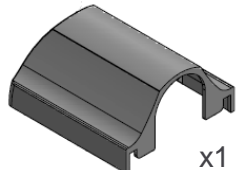
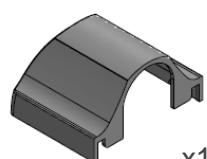
US ^{Max} EU

88lbs | 40kg



**Safety instructions and installation warnings (provided separately)
must be read in full, prior to assembly.**

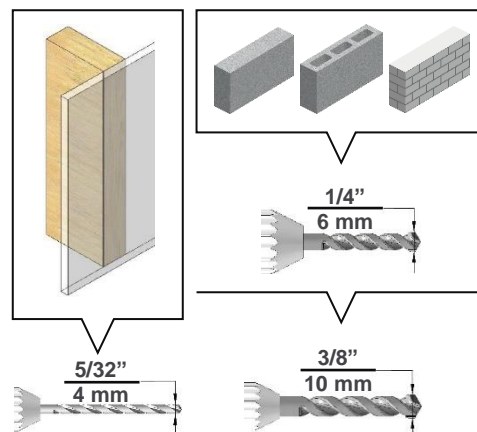
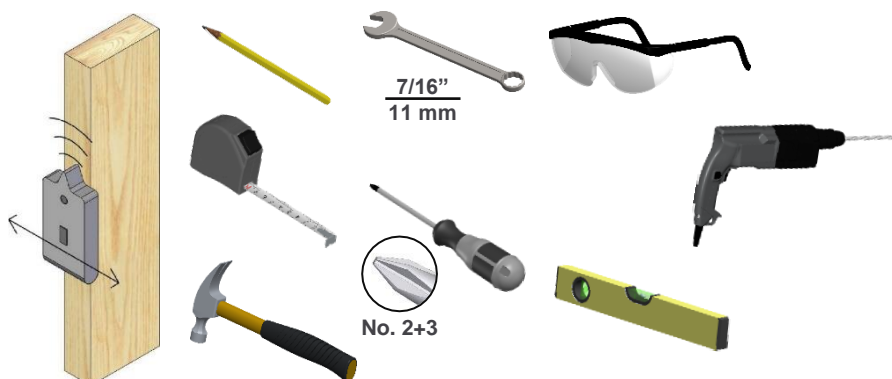
Included Parts not to scale

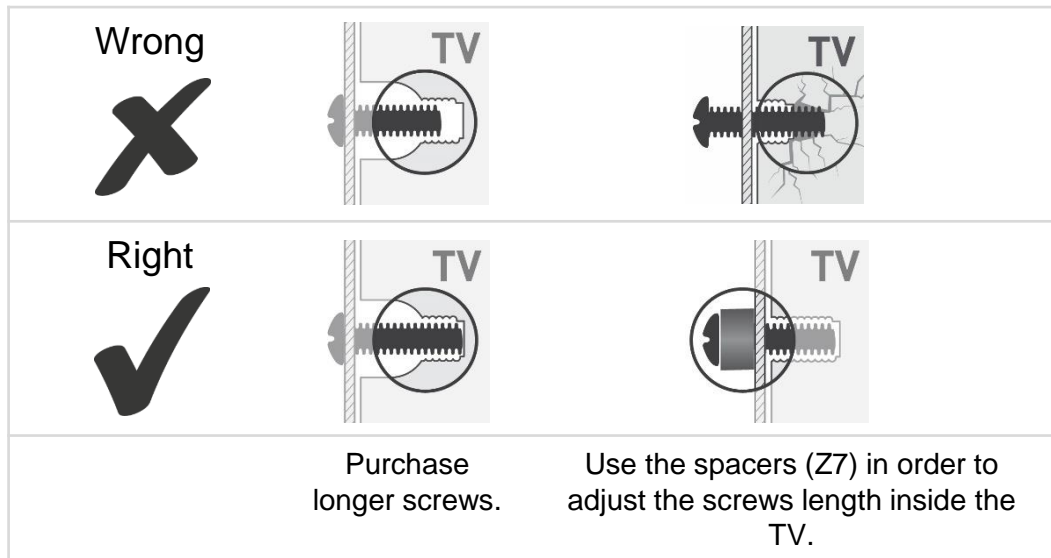
A  x1	B TV Plate  x1	C Adaptor  x4	
Z6  x6	Z7  x4	Z8  x2	Z9  x2
Z10  x4	W1  x3	W2  x3	W3  x3
Y1 Cable Management  x1	Y2 Wall Plate Plastic Cover  x1	Y3 Wall Plate Plastic Cover  x1	



#	M	L mm	L inch	pcs
Z1	4	20	3/4	4
Z2	6	16	5/8	4
Z3	6	25	1	4
Z4	8	25	1	4
Z5	8	45	1 3/4	4

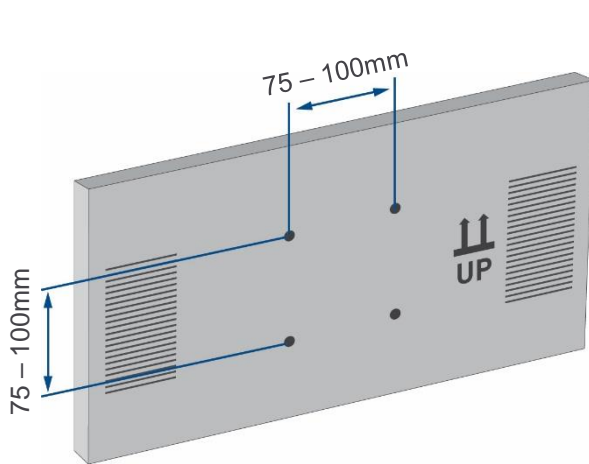
Required Tools



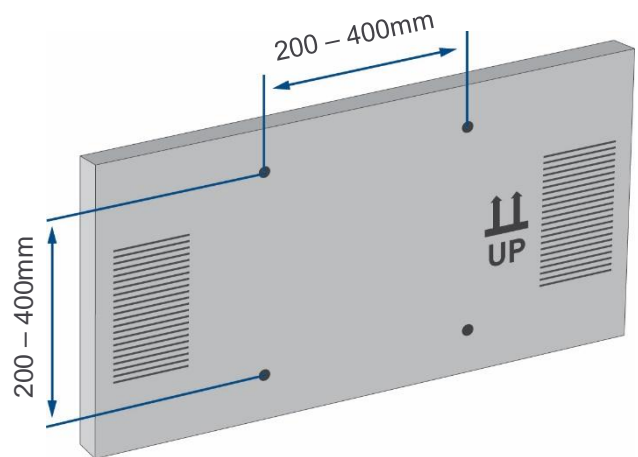


1

Continue according to your TV mounting hole pattern.



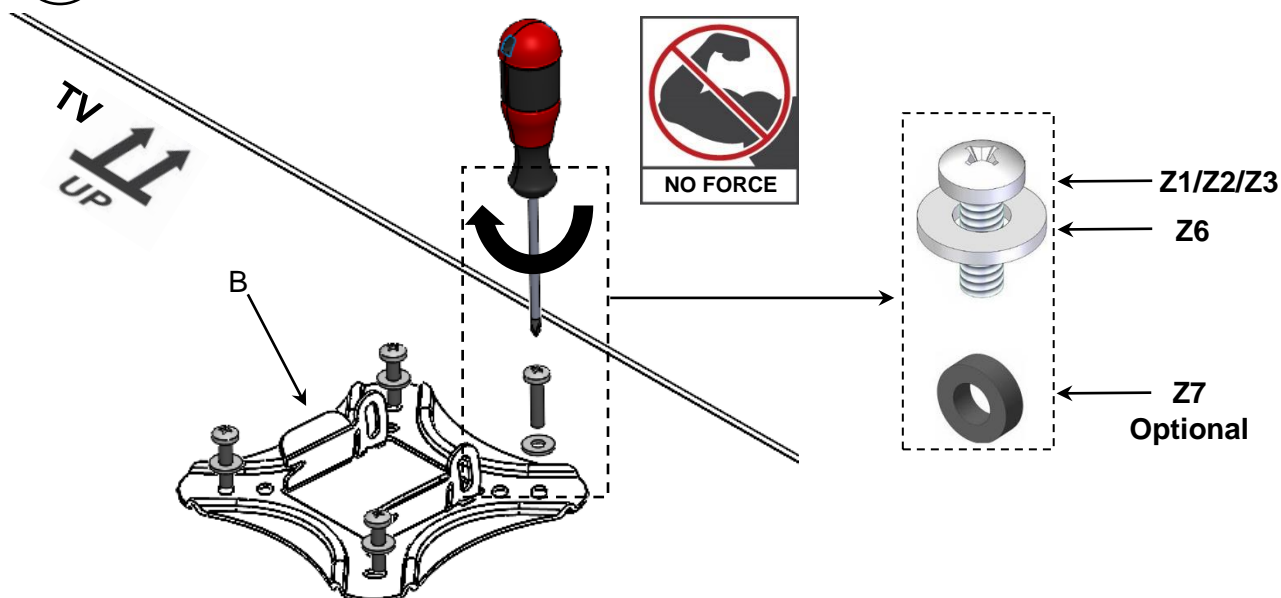
1a



1b

Page 4

1a 75x75 mm up to 100x100 mm hole pattern.

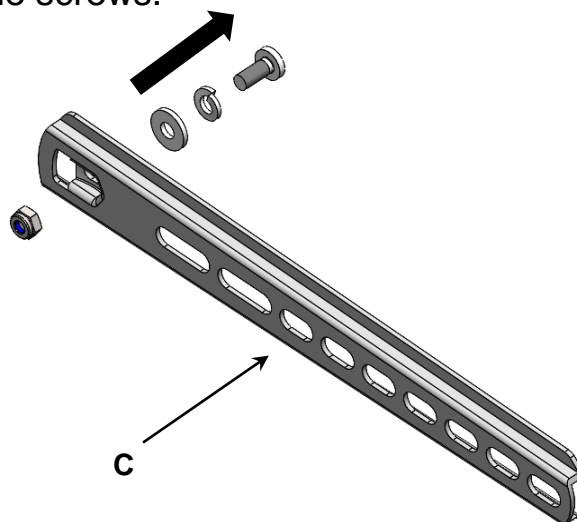


2

Page 6

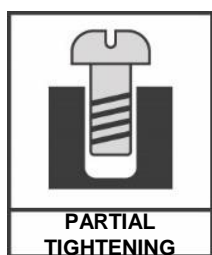
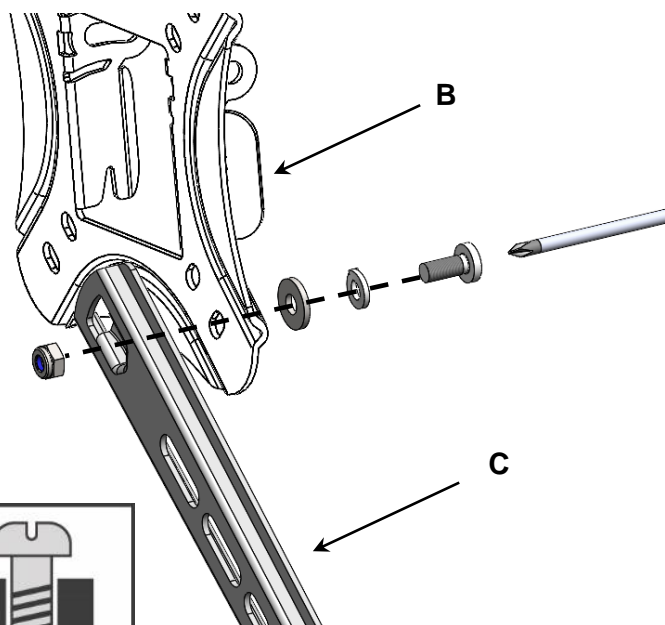
- 1b) Hole pattern 100x200 mm up to 400x400 mm:**
Disassemble the screws, connect the 4 Adaptors to the TV Plate and reassemble the screws.

(1)

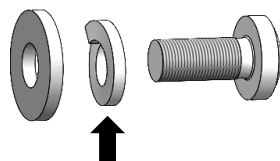


(2)

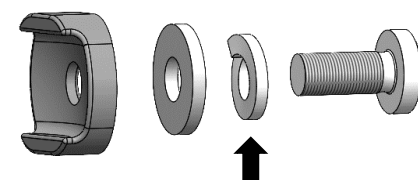
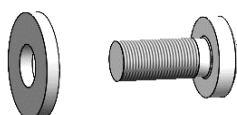
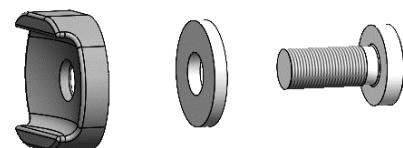
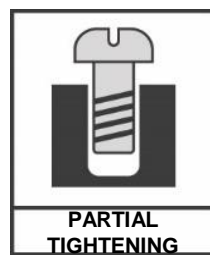
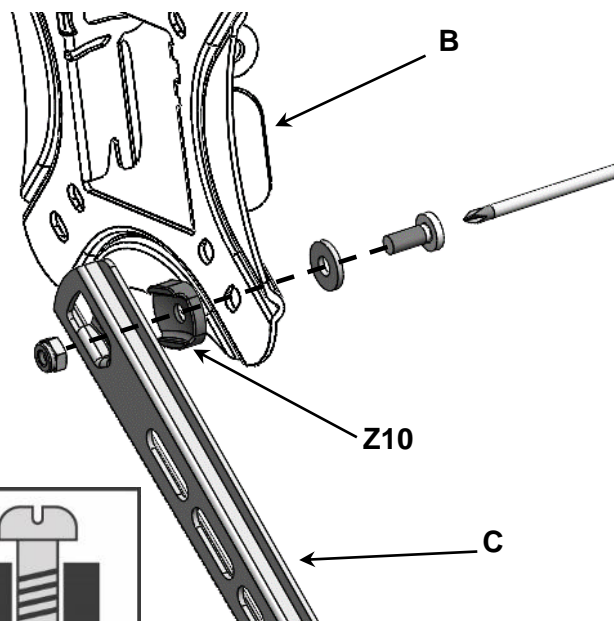
Flat TV



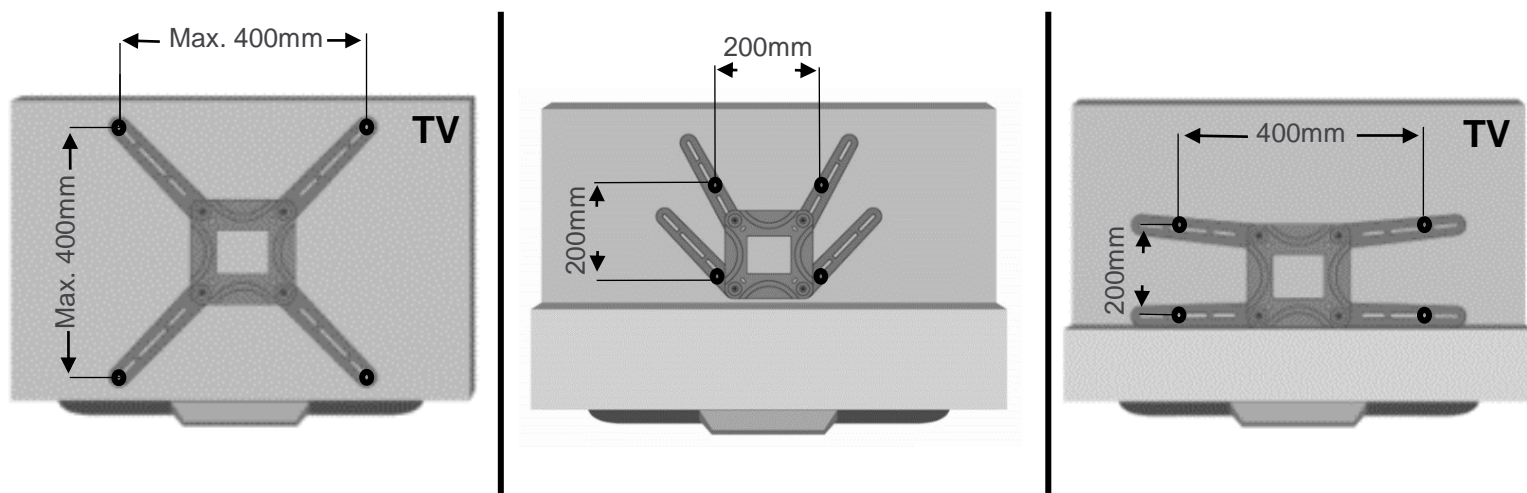
Z10



Curved TV

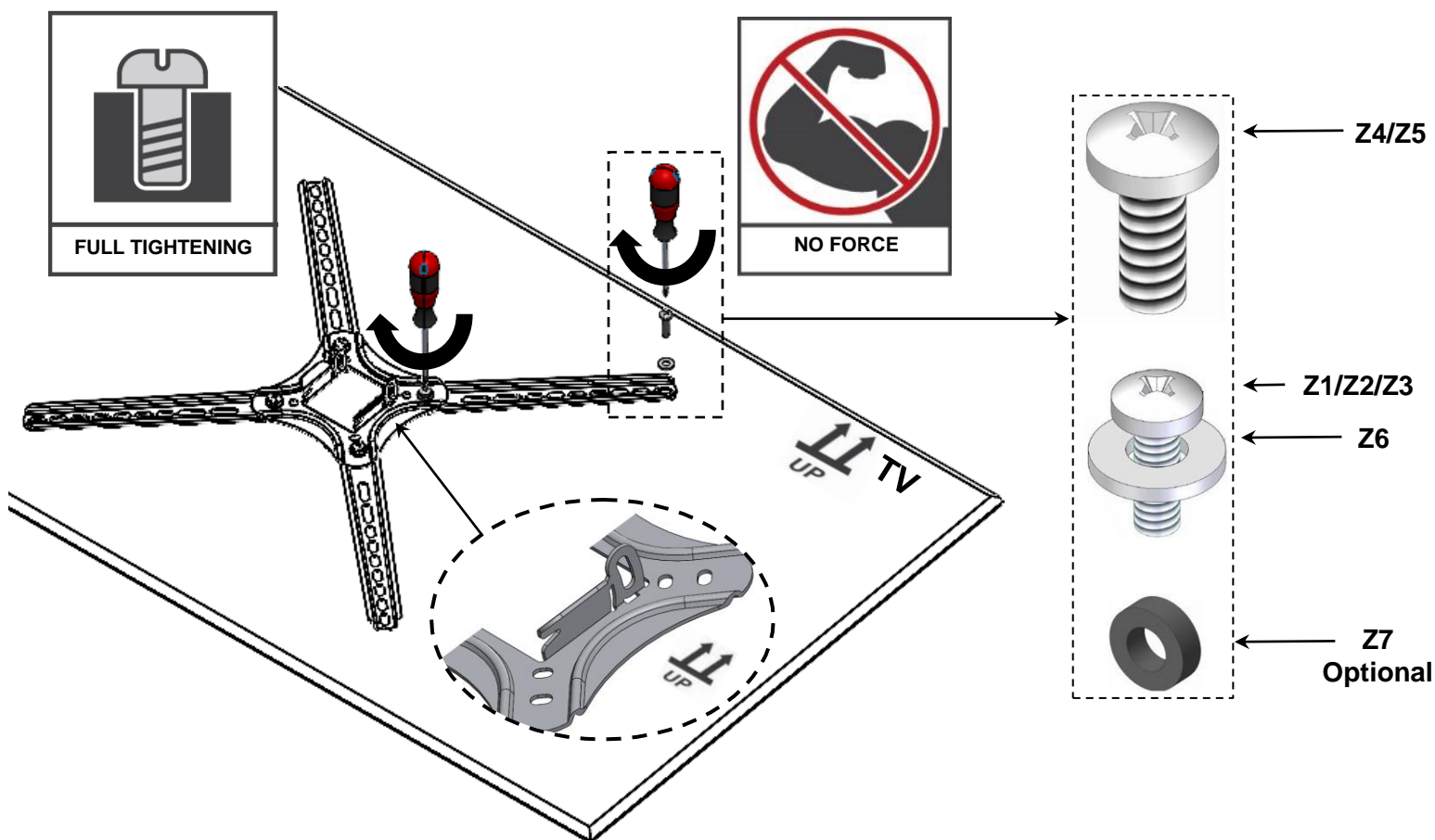


Position the Adaptors according to your TV's hole pattern.



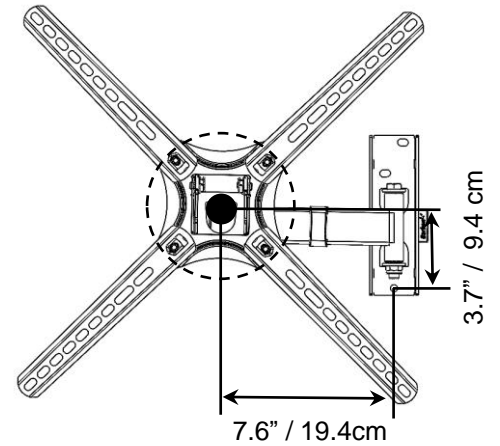
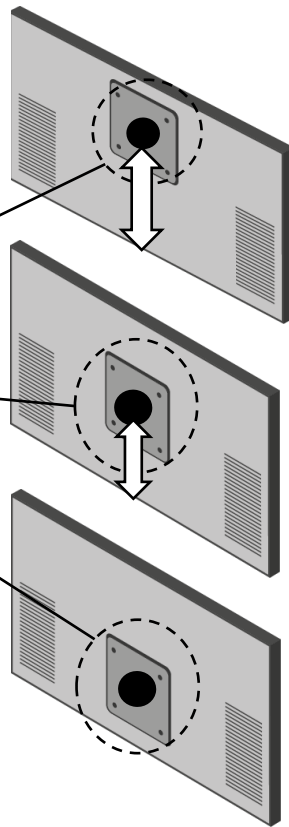
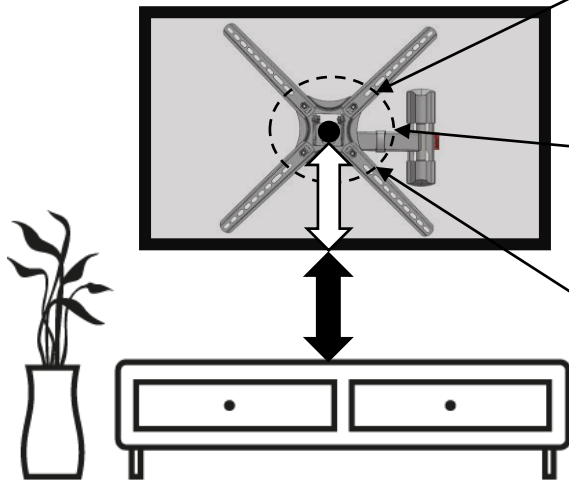
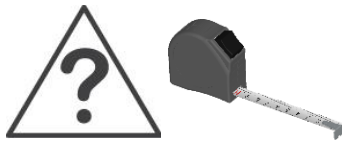
For more positioning options turn to page 10.

Connect the TV Plate with the Adaptors to the TV in all 4 connection holes.



2

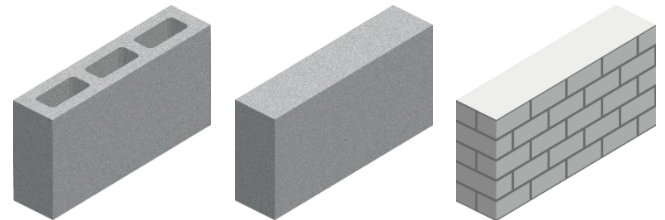
Measure the distance between the location of the TV's mounting holes' center and the bottom of the TV, in order to set the required height of the TV.



<https://www.barkanmounts.com/faq>

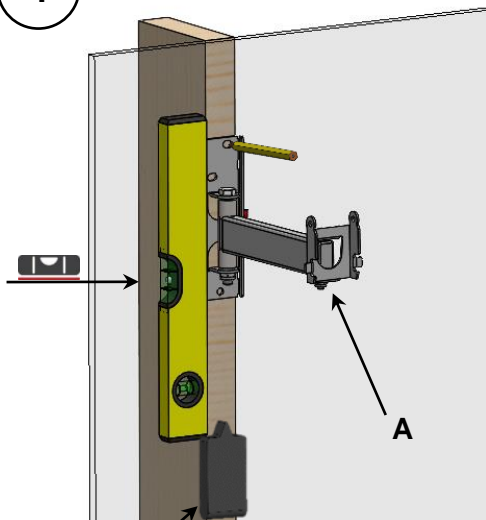
3

Follow the steps according to your wall type.

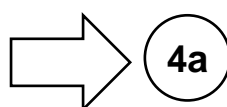
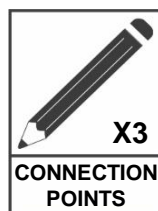


4

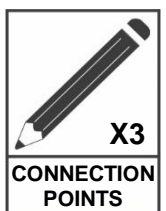
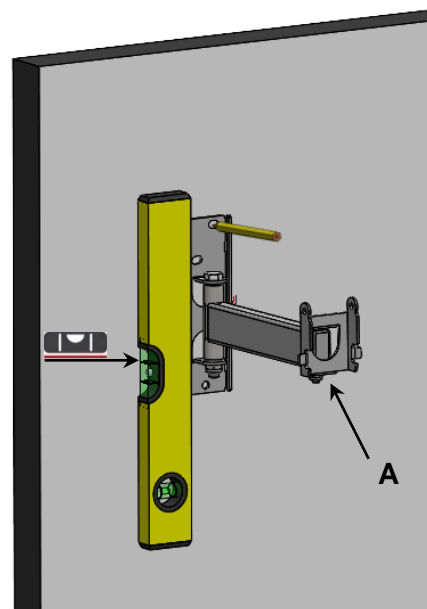
Mark the holes on the wall according to



Use a Stud Finder

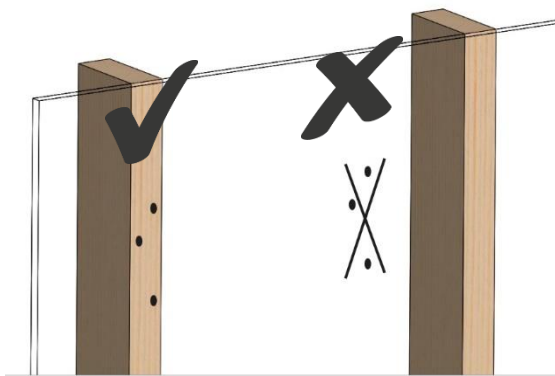


Page 7

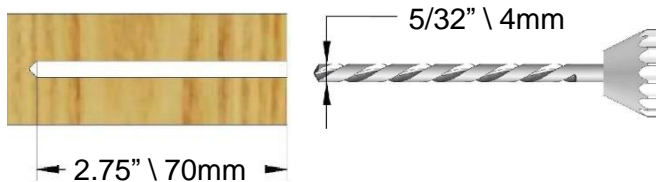


Page 7

4a Make sure all holes are drilled inside the studs.

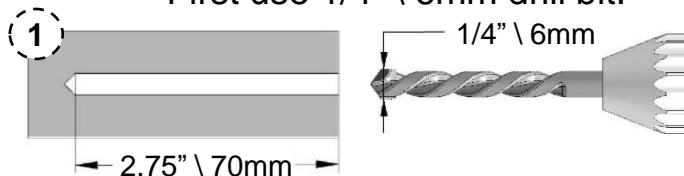


Drill with 5/32" \ 4mm drill bit.

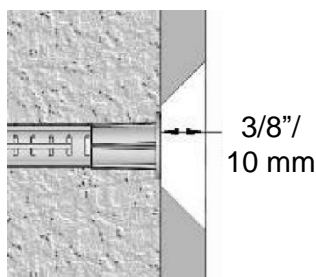
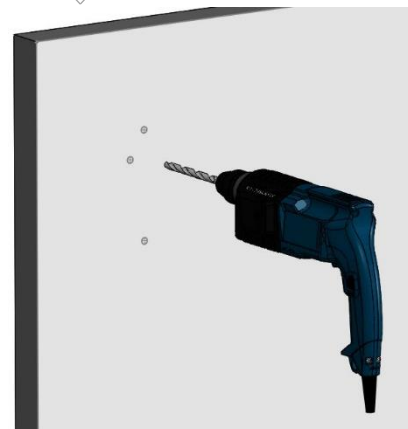
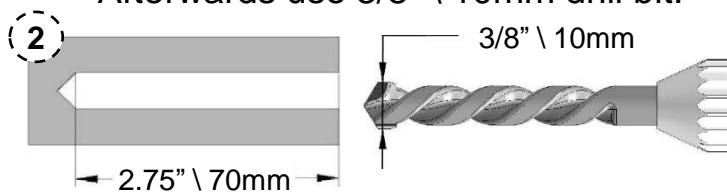


4b

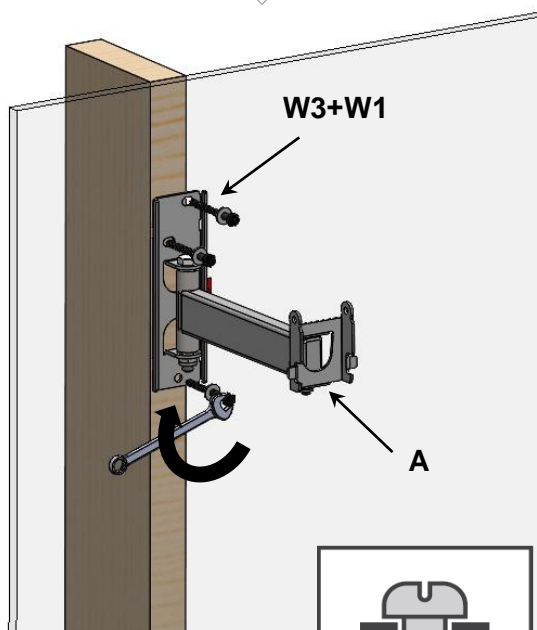
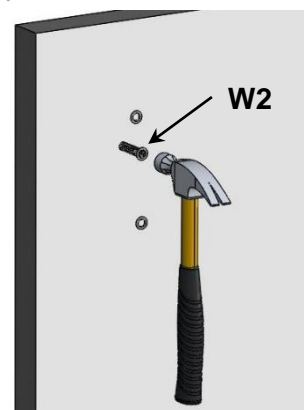
First use 1/4" \ 6mm drill bit.



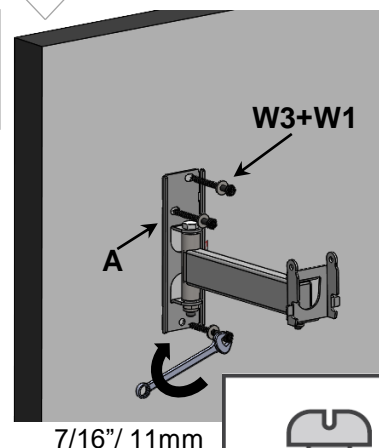
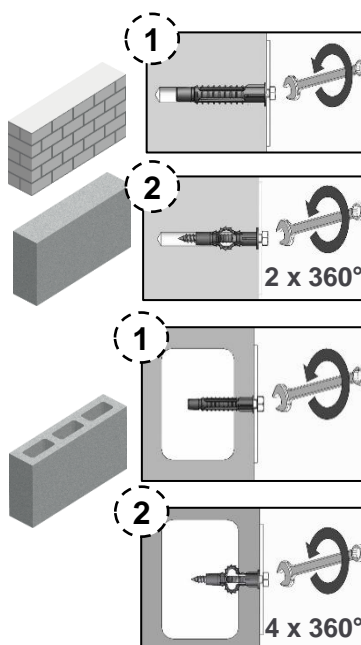
Afterwards use 3/8" \ 10mm drill bit.



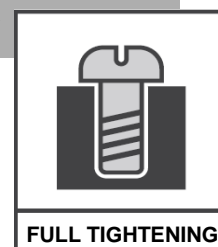
The anchor must be sunk at least 3/8"/10 mm into the plaster coating.



7/16" \ 11mm

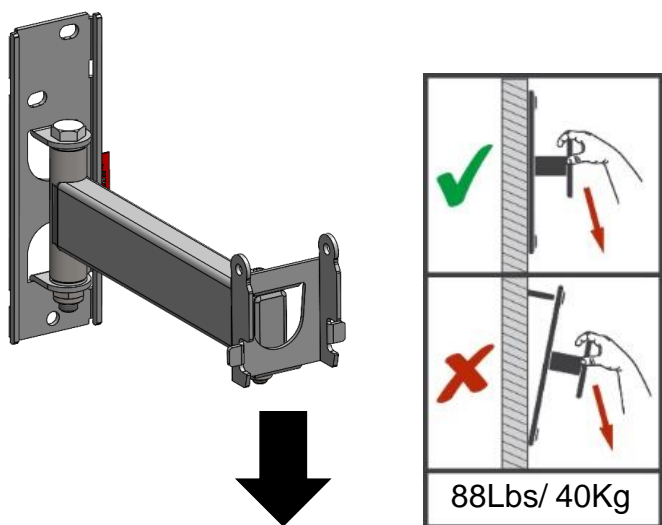


7/16" \ 11mm

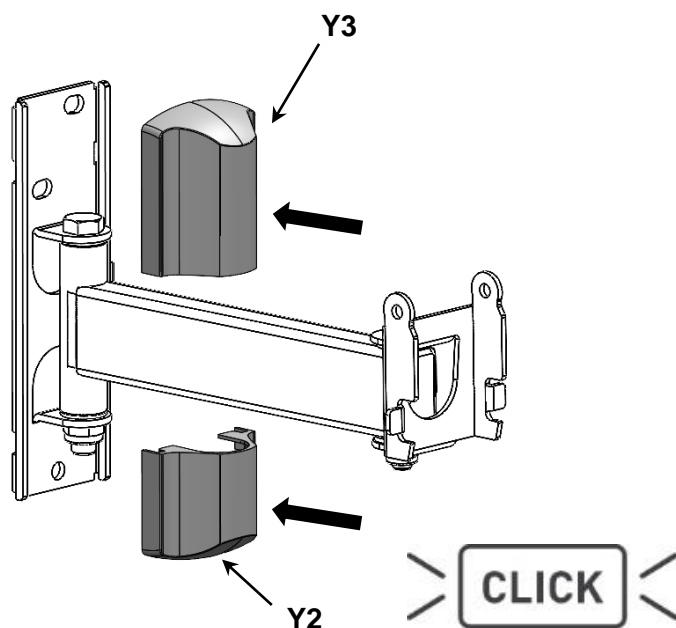


5 Weight test

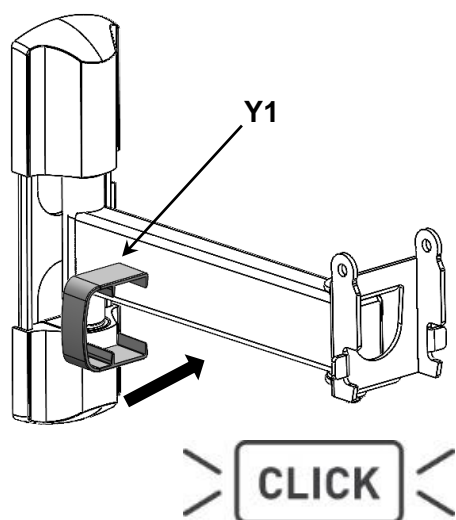
Apply force on the upper part of the Bracket and make sure it is well connected.



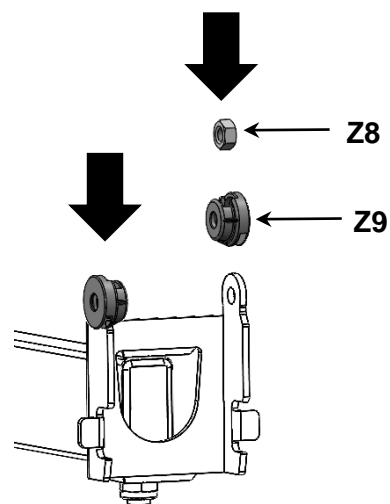
6 Assemble the Wall Plate Plastic Covers.



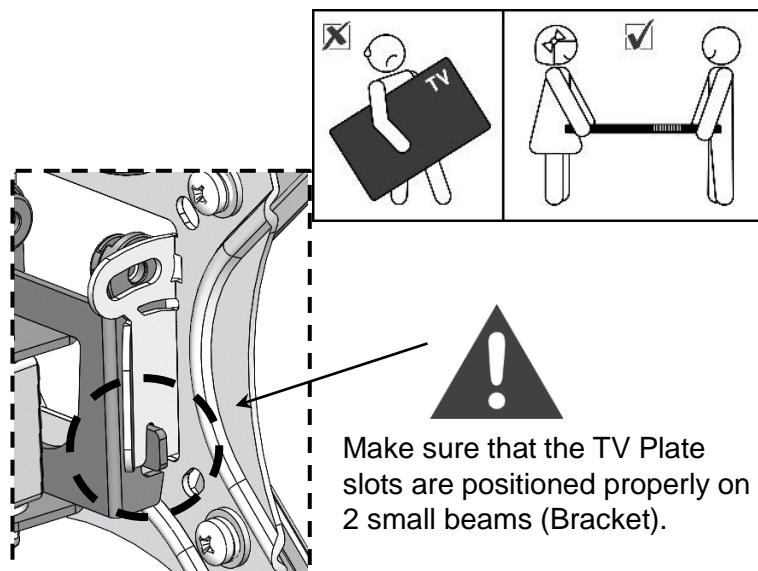
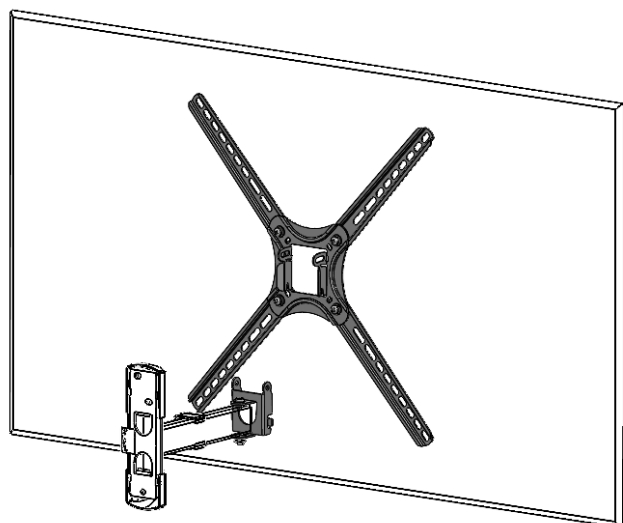
7 Assemble the Cable Management.



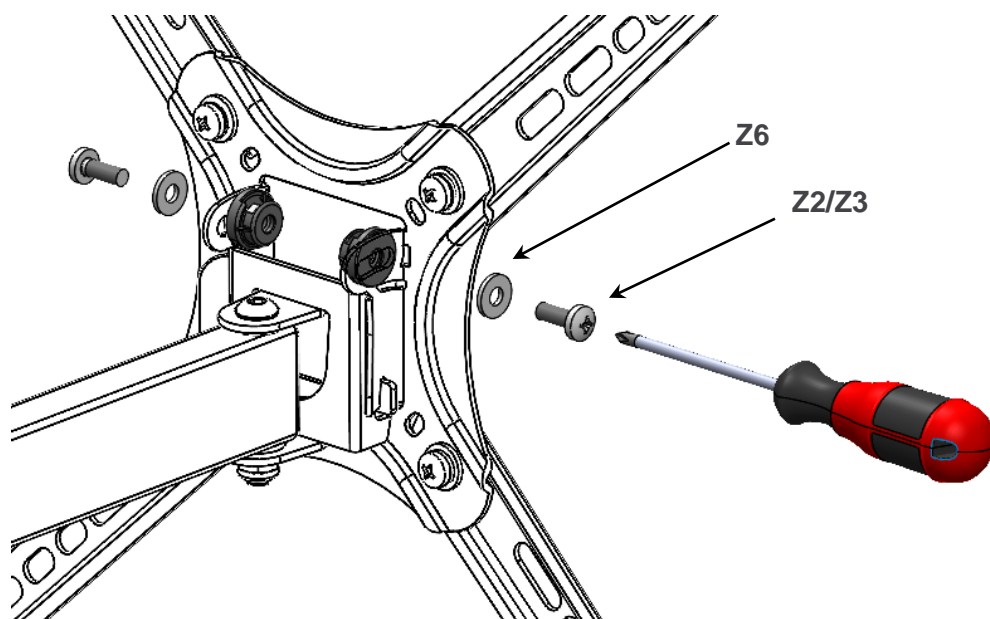
8 Place the plastic nut-housings (Z9), and then insert the two nuts (Z8).



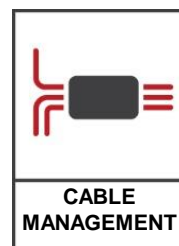
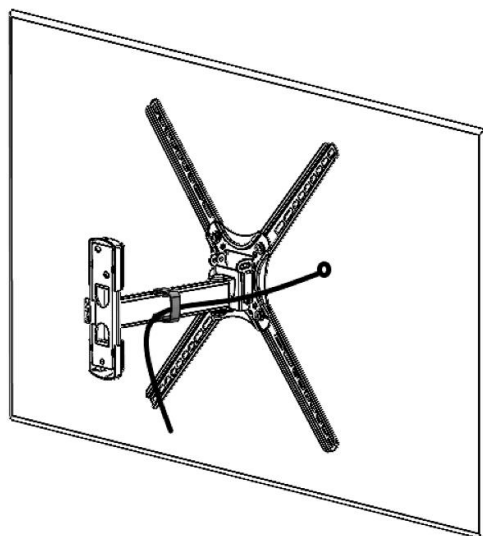
9 Connect the TV with the TV Plate to the Bracket.



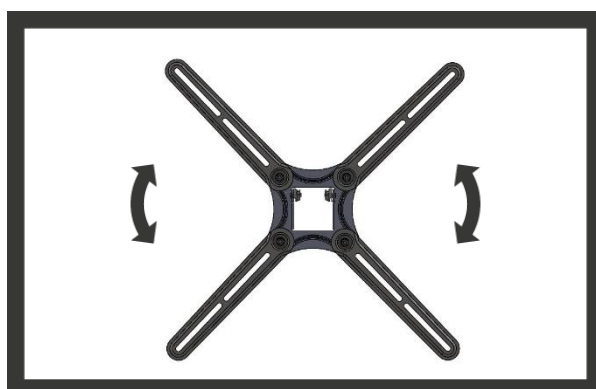
- 10** Insert and tighten the screws from both sides to create friction for the tilt mechanism. Adjust the TV tilt angle carefully.



- 11** Place the TV cables in the Cable Management.



- 12** Level the TV.



BACKSCREEN CONNECTION POSITIONING OPTIONS

